

# SY110SA Utility Users Manual

Version 1.50



© 2005 by SYRIS Technology Corp.

**SYRIS Europe SA**

Boulevard Louis Schmidt 119/3,

B-1040 Brussels

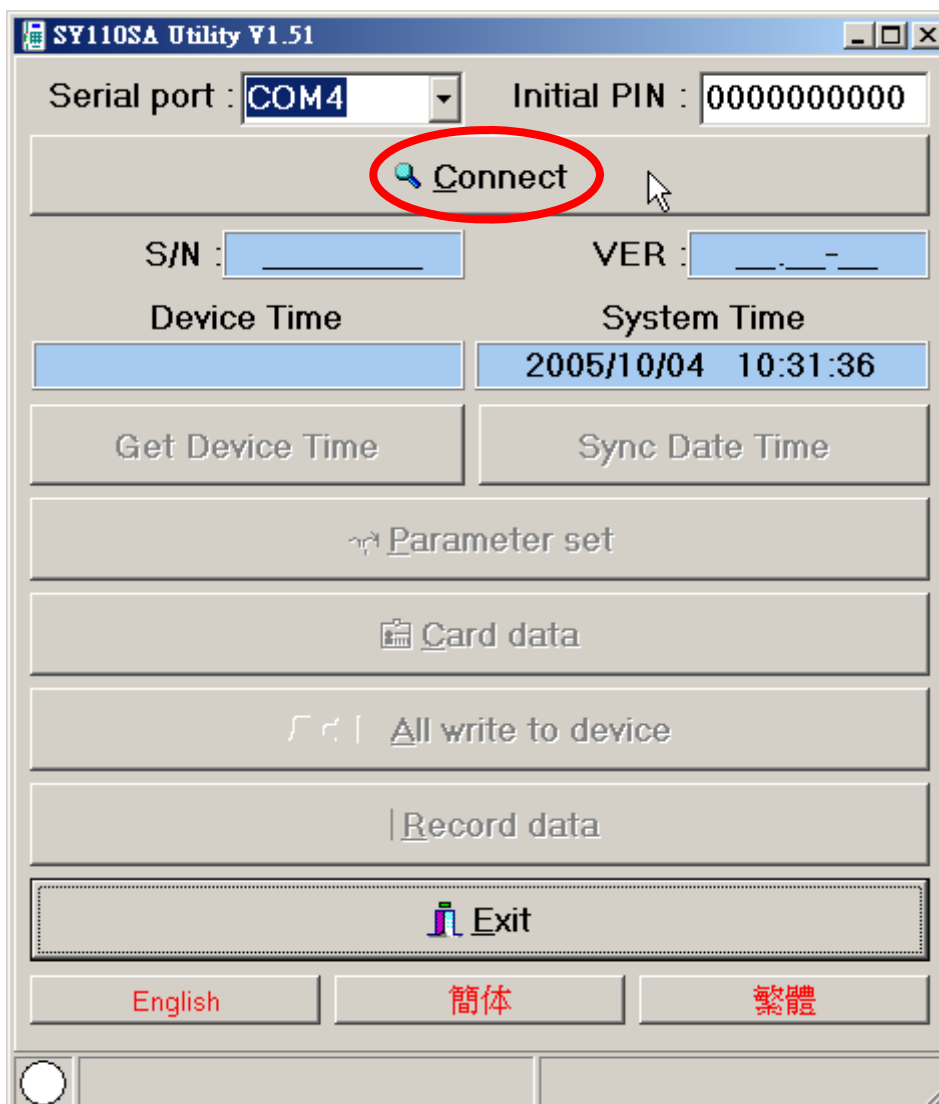
Tel : 0032 2743 7139

Fax : 0032 3411 0856

Ftp://www.syris.net

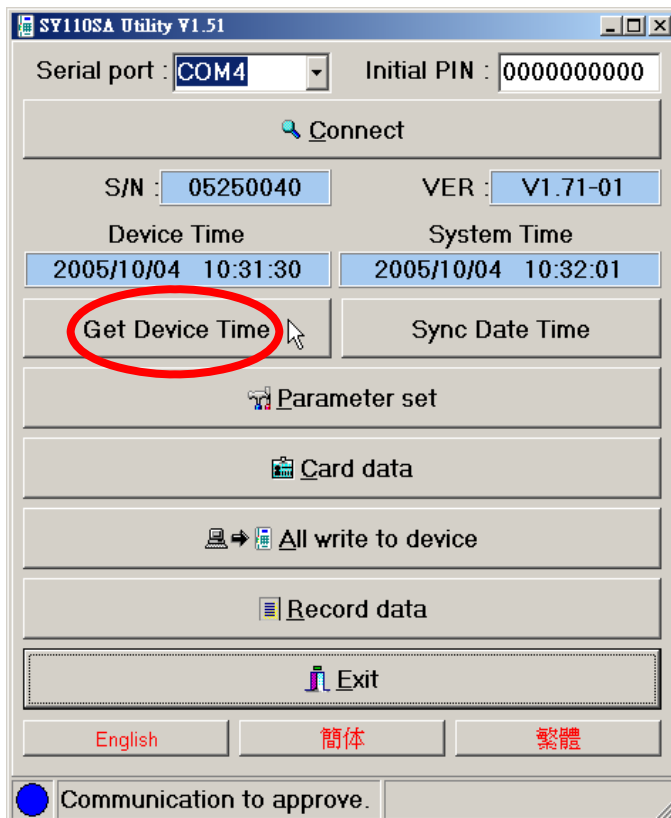
## SY110SA Connect

1. Activate utility of SY110SA, then click the button of **Connect**. The software will be on-line according to the port that was connected to SY110SA .
2. Input the initial password then click Connect  
If the input is the same as **Initial PIN** of SY110SA, the state line will show **Communication to approve**. If the input is **NOT** the same as **Initial PIN** of SY110SA, the state line will show **Communication ok**.
3. If the state is shown "**Communication to approve**", the users can modify password that was initialed by hardware and manage parameter. If the state is shown "**Communication ok**", the users can't modify password or manage parameter.
4. **Communication Error** will be shown when the connection have not connected correctly with computer.



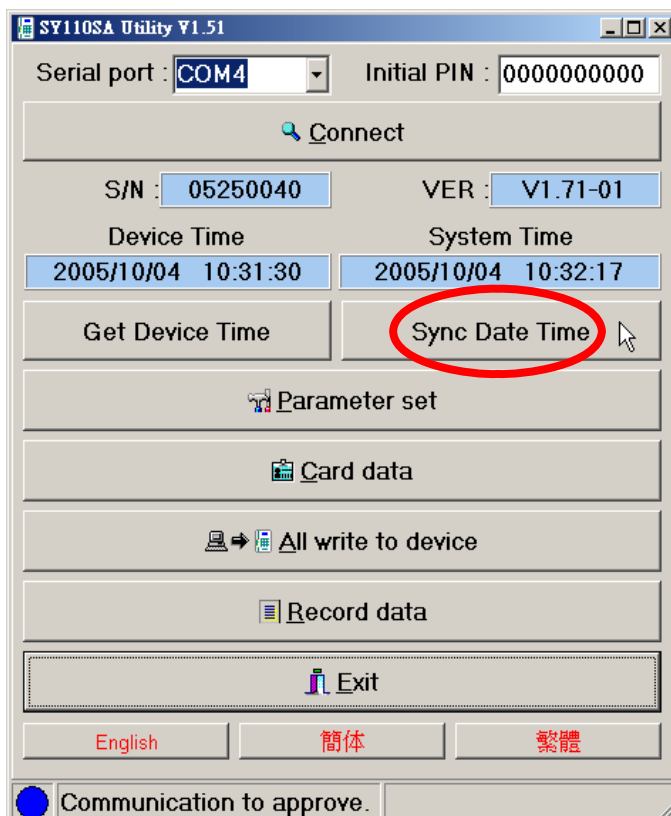
## Get Device Time:

The function can help you get the time of SY110SA immediately .



## Sync Date Time:

The function can help you keep your local computer up-to-date with the current time of SY110SA.



### Parameter set

1. Read from device: The system will read the value of parameters that was checked above of the device .
  2. Write to device:
    - The system will set the value of parameters that was checked above to the device .
    - When the state of system is "Communication to approve", users can set the value of parameter to the device .
  3. Read from file: Read the file of device parameter value . (Parameter data file)
  4. Write to file: It will set the value of parameter into the file. (Parameter data file)
  5. Clear screen data: It will clean all data on screen.
  6. Set the initial PIN:
- If the state is "Communication to approve", you can modify password that was initialed by hardware.

Master parameter  
 Card parameter  
 Output parameter  
 Input parameter  
 Alarm parameter

1 Read from device

2 Write to device

3 Read from file

4 Write to file

5 Clear screen data

6 Set initial PIN

Parameter set
X

Detailed View

Type	Name	Value
Master parameter	Master PIN #1	5678—
Master parameter	Master PIN #2	—
Master parameter	Master PIN #3	—
Master parameter	Master card #1	0000000000
Master parameter	Master card #2	0000000000
Master parameter	Master card #3	0000000000
Card parameter	Pass mode	Card
Card parameter	Card Type	EM CARD
Card parameter	Card Bytes	3 Bytes
Output parameter	Open door relay	Inner Relay[Time(s
Output parameter	Door bell relay	External relay[Time
Output parameter	Alarm relay	None
Input parameter	Open door button #1	DI #1
Input parameter	Door sensor	DI #2
Input parameter	Door bell #2	Bell button

Master parameter  
 Card parameter  
 Output parameter  
 Input parameter  
 Alarm parameter
 

Read from device

Write to device

Read from file

Write to file

Clear screen data

Set initial PIN

View mode
Communication to approve.

### Card data

1. Read from device: The system will read the card data according to the setting of CardNo.
2. Write to device:
  - The system will set the card data according to the setting of CardNo to device.
  - If the option of **"Delete all cards"** was checked, system will delete all card data of device before set card data to device.
3. Delete all cards: Delete all card data which are saved in the device.
4. Read from file: Read the file of card data. (**Card data file**)
5. Write to file: Write the card data into the file. (**Card data file**)
6. Clear screen data: It will clean all data on screen.
7. Quick add card: See the detail operation procedures as next page.

Card no. from: 1 to: 100

1 Read from device

Delete All Cards

2 Write to device

3 Delete all cards

4 Read from file

5 Write to file

6 Clear screen data

7 Quick add card

Card data

Detailed View

Card no.	Card ID.	Card PIN.
0003	0005355736	1234
0004	0005355738	1234
0005	0005355737	1234
0006	0005355684	1234
0007	0005355761	1234
0008	0005355769	1234
0009	0005355770	1234
0010	0005355682	1234
0011	0005355768	1234
0012	0013982582	1234
0013	0013975808	1234
0014	0013975609	1234
0015	0013981232	1234
0016	0013982795	1234
0017	0013976045	1234
0018	0005341541	1234

Card no. from: 1 to: 100

Read from device

Delete All Cards

Write to device

Delete all cards

Read from file

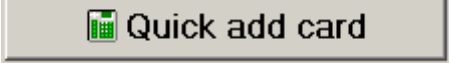
Write to file

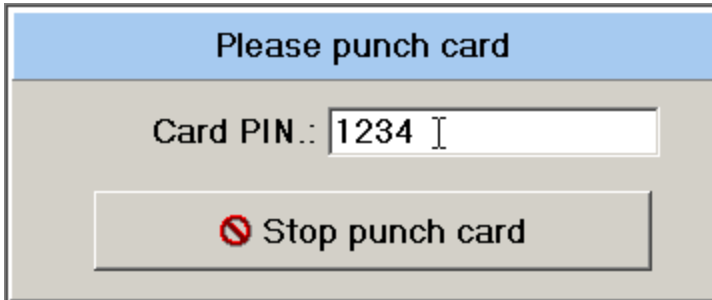
Clear screen data



Quick add card

View mode Communication to approve.

## Increase cards fast

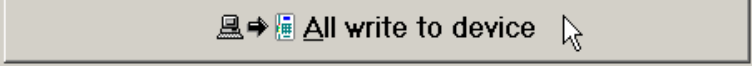
1. Click  .
2. If the password of card was required, please enter the password to the field of **Card PIN**.

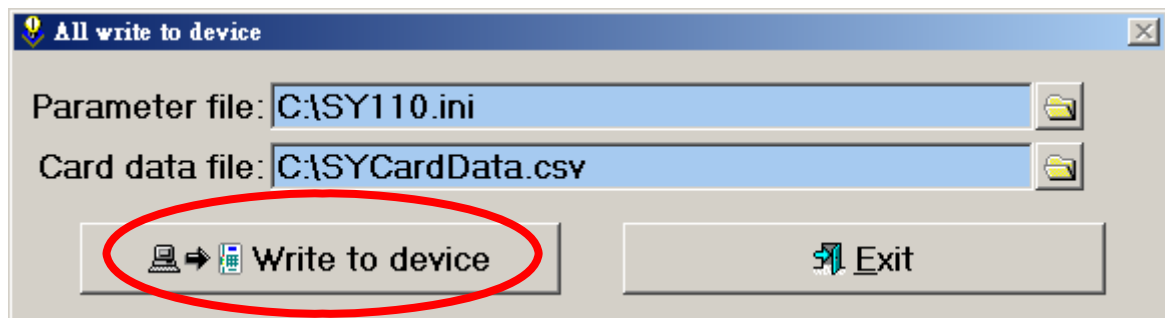


3. Punch card to SY110SA to add the card data.
4. If the card was added, please click  .
5. Click  to transfer card data that were added to device.

## Write all data to device

It will refer to the saved files of parameter data file and card data file and write all data to SY110SA quickly.

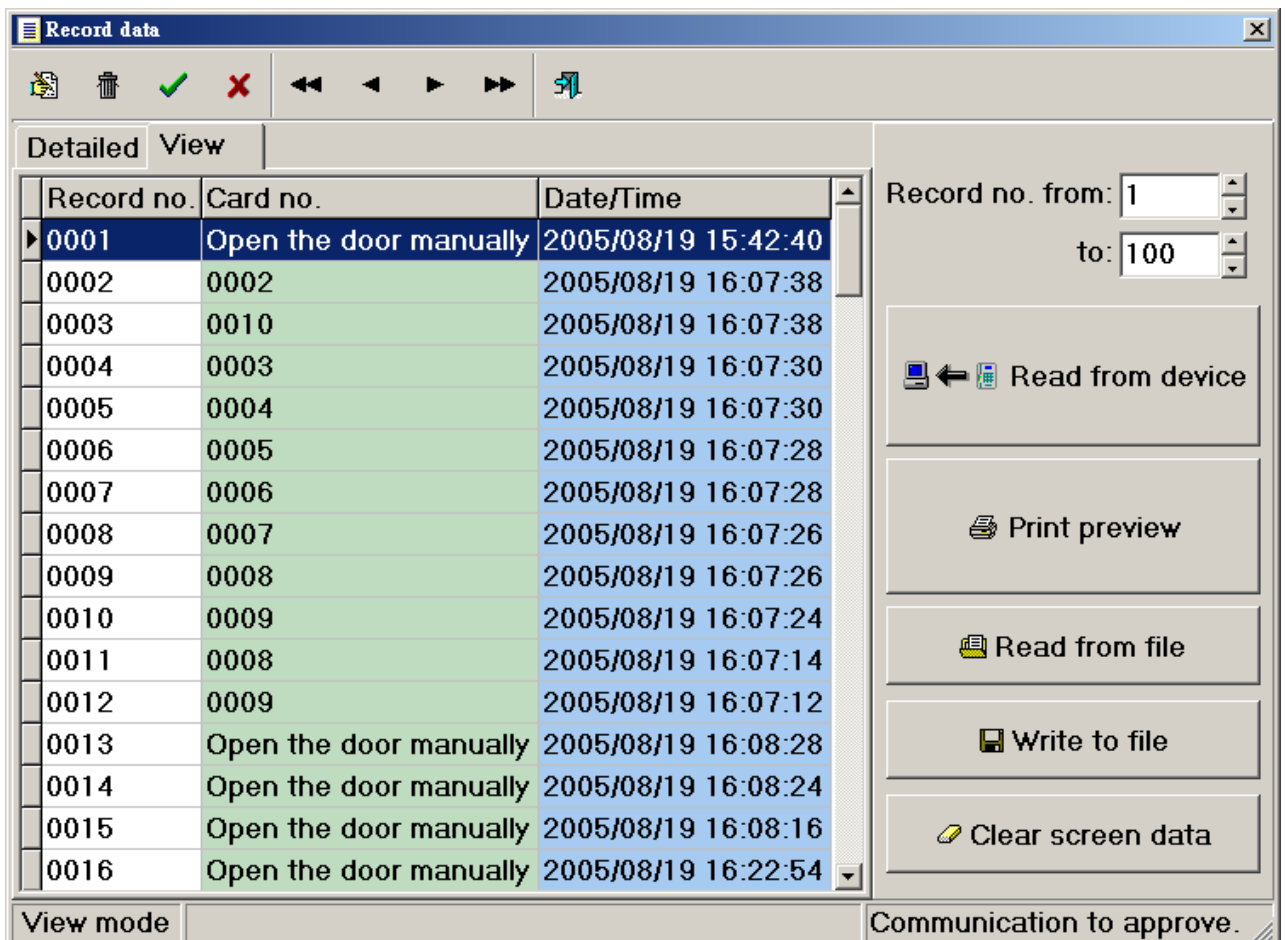
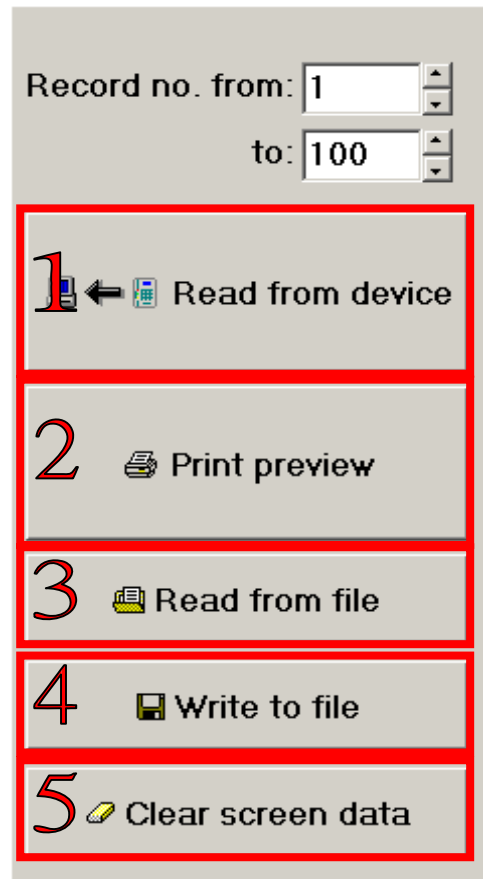
1. Click  .
2. Set the path or file location of Parameter file and Card data file correctly.
3. Connect device of SY110SA to port of local computer and click **Write to device**.



4. Before clicking button of **All write to device**, you must enter correct password that is the same as initial password in SY110SA. It will allow you to set the value of management parameter setting to device.
5. System will **remove all data of cards in the device** before writing data to the device.

### Record data

1. Read from device :  
System will get the punch card record from device according to number of records.
2. Print preview : Preview the report of punch card record.
3. Read from file: Read the punch card data file.  
**(Card data file)**
4. Write to file: Save the punch card data to file.  
**(Card data file)**
5. Clear screen data: Clean all data on screen.



## The Language Setting

The system provides three kinds of language which are **English**、**Chinese (Simplified)**、**Chinese (Traditional)** to the software.

